

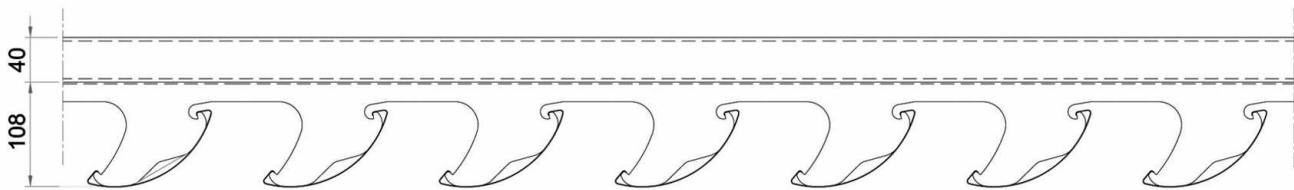
Description:

DEXONE CR160 Celoscreen Sun Louvers are made up of 0.8mm thick aluminum panel, roll formed, in 1/4 elliptical shape. Vertical width of the panel is 141.5mm, both ends edging inside, can clip into the carrier directly. The carrier pitch can be 120mm, 150mm, 175mm. This system can be used as both sun louvers and metal ceiling.

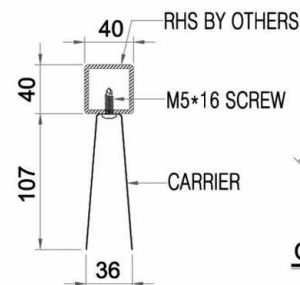
Material:

CR160 Sun Louvers panel is made up of 0.8mm thick aluminum panel, vertical width of the panel is 141.5mm, arc length 160mm, maximum length 4000mm. The panel can be perforated, open area 12%~21%. The surface of the panel can be PVDF spraying, powder coating or pre-painted.

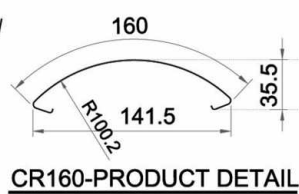
CR carrier is made up of 1.0mm thick GMS steel, width 108mm, maximum length 4000mm, the angle of the latch is 60 degrees, It has 3 pitches: 120mm, 150mm, 175mm, providing several options of openness to obtain an adequate sun protection. The surface of the CR carrier can be PVDF spraying and powder coating.



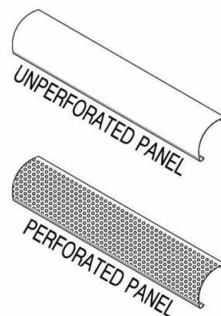
CR160-SECTION



CARRIER DETAILS

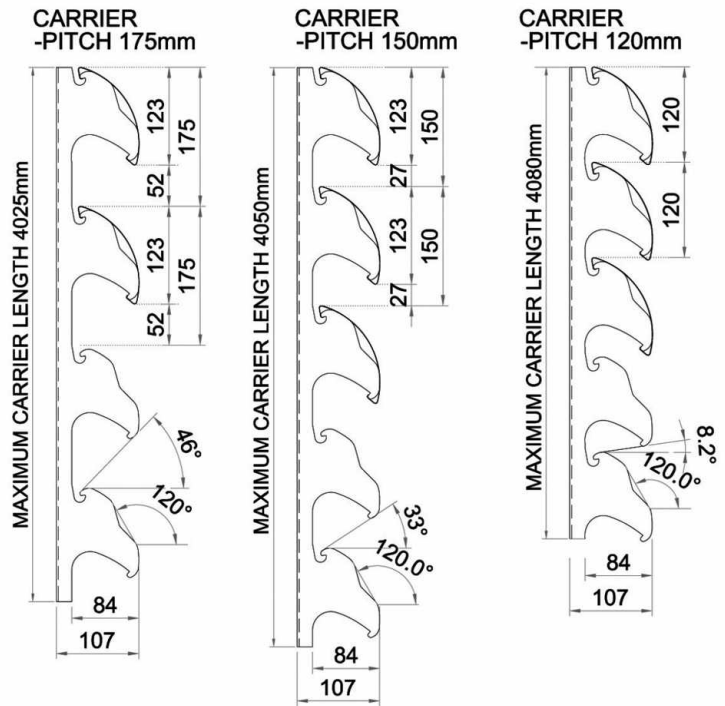
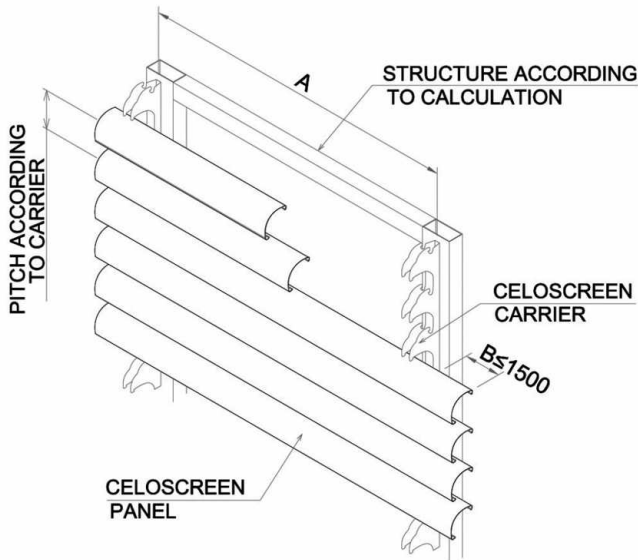
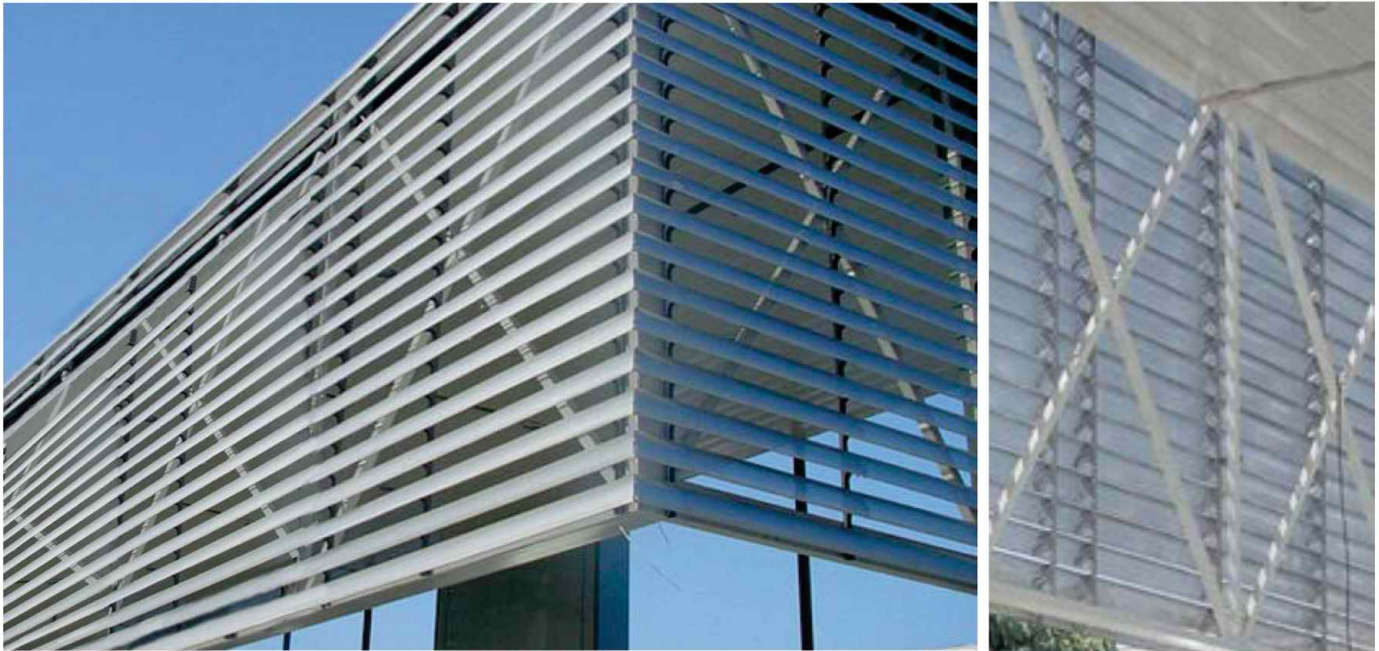


CR160-PRODUCT DETAIL



PERFORATION PATTERNS

# A-01 φ3mm 20% OPEN ← 6.35mm ↓ 5.5mm	# A-02 φ2.5mm 16% OPEN ← 5.5mm ↓ 5.5mm	# A-03 φ4mm 21% OPEN ← 9.53mm ↓ 8.25mm	# A-04 φ4mm 12.5% OPEN ← 10mm ↓ 10mm



Installation:

The CR carrier is in “U” shape, there is installation hole inside of the carrier, fixed directly to the wall or steel frame by screw. It can also be used as metal ceiling, hanged by ϕ 8mm bolt, distance suspended between two carriers is 1000~1500mm. The CR panel can be clipped into the carrier directly, each panel can be removed or installed separated. The panel can be installed either vertical, horizontal or in angled surface.

DESCRIPTION		MATERIAL	THICKNESS		RECOMMENDED MAX. LENGTH		MAXIMUM DISTANCE BETWEEN CARRIERS	COLORS
			mm	in	m	ft		
TYPE								
CARRIER		Aluminum	1.0	0.039	4.08	13.39	Inside: 900~1200 Outside: 800~1000	Various RAL and woodgrain colors available
		G.M.S.	0.8	0.031	4.08	13.39		
CELOSCREEN PANEL	CR160-120	Aluminum	0.8	0.031	4	13.12		Various RAL and woodgrain colors available
	CR160-150							
	CR160-175							