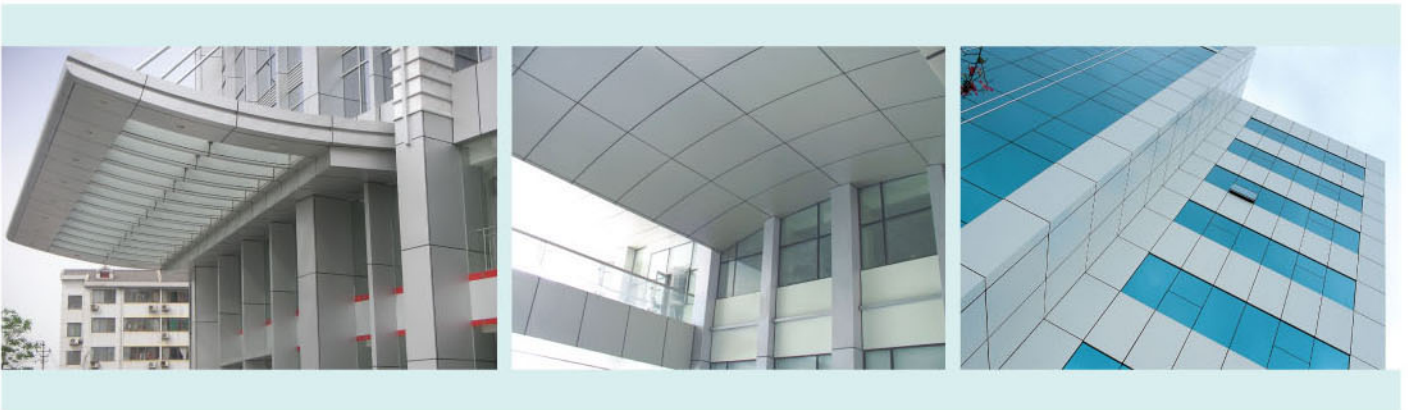
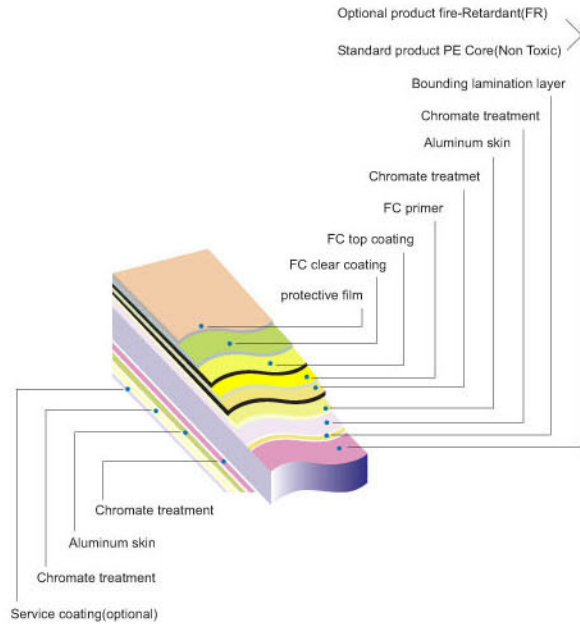


SPECIFICATION:

- 1) Panel thickness:3mm,4mm,5mm,6mm
- 2) Aluminum thickness:0.15mm,0.21mm, 0.30mm,0.40mm,0.50mm
- 3) Width:standard:1220mm,max 1500mm
- 4) Length:standard:2440mm,max:10000mm
- 5) Colors:40 colors to choose,and RAL colors

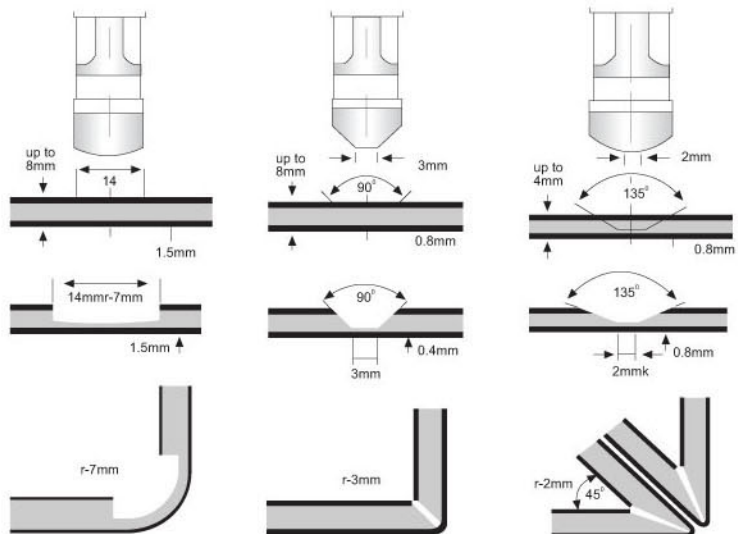
APPLICATION

- 1) curtain wall & facades
- 2) building renovation
- 3) partition wall
- 4) sign board,advertising board

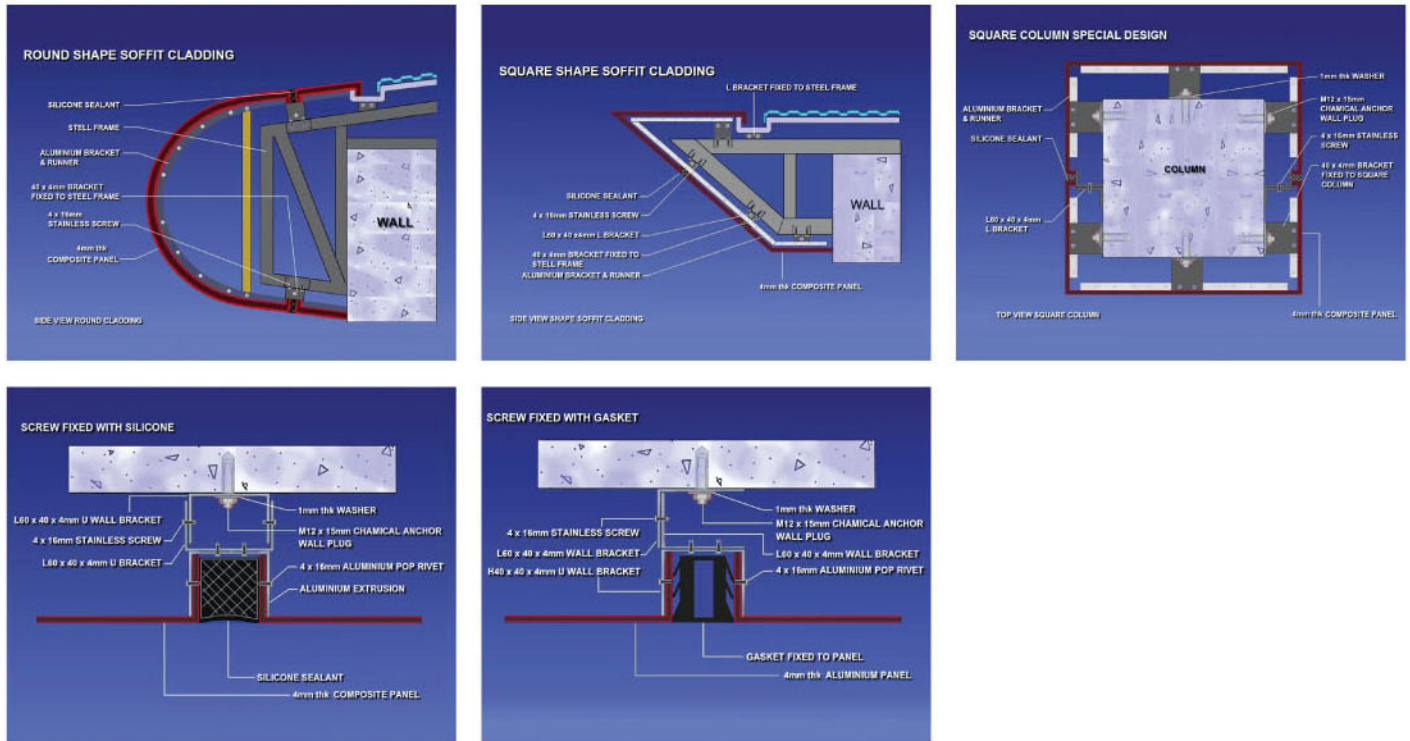


PROCESSING:

Aluminum composite panel is very easy to process.All cutting,milling,slotting,sidelifolding and curving can be easily fulfilled by simple tools used for processing timber and metal.It can be shaped into various shapes,such as curve,reverse curve,curve corner and sharp curve, according to the requirements of building design.It is incomparable for other decorating materials.Normal aluminum product processing machinery and wood product processing machinery can be used for processing of DEXONE ACP panels without special device.



INSTALLATION WAY FOR ALUMINUM COMPOSITE PANEL



Test Results (3mm ACP with PE coating)

Test Items	Standard Value	Test Results (3mm)
Coating Thickness, μ m	≥ 16	20
Gloss deviation	Extreme value error ≤ 5	3
Pencil Hardness	\geq HB	3HB
Coating flexibility. T	≤ 3	1
Cohesive force, grade	Grid drawing method grade1	Grade 1
Compact resistance, 50kg. cm	No peeling, no cracks	No peeling, no cracks
Bend strength, Mpa	≥ 60	83.4
Bend flexibility modulus, Mpa	$\geq 1.5 \times 10^4$	2.1×10^4
Penetrating resistance, KN	≥ 5.0	6.5
Cut strength, Mpa	≥ 20.0	23.2
180° Peel strength, N/mm	≥ 5.0	5.0
Temperature difference resistance	No change	No change
Heat expansion coefficient, $^{\circ}\text{C}^{-1}$	$\leq 4.00 \times 10^{-5}$	3.20×10^{-5}
Heat deformation temperature, $^{\circ}\text{C}$	≥ 105	119.6
Acetonic acid resistance(500h)	No less than grade 2	No change
Boiled water resistance	No change	No change
Chemical Resistance	Acid resistance	No change
	Alkali resistance	No change
	Oil resistance	No change
	Solvent resistance	No bottom appearing
	Washing resistance	≥ 10000 times
Artificial aging Resistance, 500h	Chromatic aberration CIELAB	≤ 3.0
	Pulverization Grade	0
	Light loss grade	No less than grade 2

Test Results (4mm ACP with PVDF coating)

Test Items	Standard Value	Test Results (4mm)
Coating Thickness, μ m	≥ 25	28
Gloss deviation	Extreme value error ≤ 5	3
Pencil Hardness	\geq HB	3HB
Coating flexibility. T	≤ 2	0
Cohesive force, grade	Grid drawing method grade1	Grade 1
Compact resistance, 50kg. cm	No peeling, no cracks	No peeling, no cracks
Compact resistance, L/m	≥ 5	8
Bend strength, Mpa	≥ 100	135.7
Bend flexibility modulus, Mpa	$\geq 2.0 \times 10^4$	2.9×10^4
Penetrating resistance, KN	≥ 9.0	10.8
Cut strength, Mpa	≥ 28.0	32.2
180° Peel strength, N/mm	≥ 7.0	7.0
Temperature difference resistance	No change	No change
Heat expansion coefficient, $^{\circ}\text{C}^{-1}$	$\leq 4.00 \times 10^{-5}$	3.00×10^{-5}
Heat deformation temperature, $^{\circ}\text{C}$	≥ 105	121.6
Acetonic acid resistance(500h)	No less than grade 2	No change
Boiled water resistance	No change	No change
Chemical Resistance	Acid resistance	No change
	Alkali resistance	No change
	Oil resistance	No change
	Solvent resistance	No bottom appearing
	Washing resistance	≥ 10000 times
Artificial aging Resistance, 500h	Chromatic aberration CIELAB	≤ 3.0
	Pulverization Grade	0
	Light loss grade	No less than grade 2



If the honeycomb board has good strength and rigidity and good flatness, aluminum corrugated composite panel is the best shape of the arc panel material . Surface panel in 1.0-1.2 mm aluminum, back panel in corrugated shape is made in steel or aluminium . This panel can better satisfy the designer requirements for special stylist, wide extensive application in theatres, exhibition hall, etc.

Surface Aluminum Alloy:

Aluminum Corrugated Composite Panel is using aluminum alloy 3003. The surface coating is using AKZO NOBEL, which is one of the biggest paint suppliers in the world. The KYNAR500 PVDF coating ,which can resist sour rain, air pollution and corrosion of ultraviolet ray, it has the advantage of long life, super adhesive strength, good luster, aging resistance, unchanged color etc.

Adhesives:

Our Company adopts the most advanced epoxy adhesive, the maximum intensity to ensure the adhesive strength between aluminum and uniform composite. Climbing drum peel strength is more than 80N .cm / cm.

Advantage:

Flat surface, shape change won't happen, even large area. The same surface painting, easy to clean.Colorful (granite colors, woodgrain colors), light weight; peeling strength up to 40N/mm; temperature difference resistance. Good function of sound-proof and heat insulation. Fireproof grade: A



Specifications:

Panel thickness: 6mm, 8mm
 Width: 1020mm, 1250mm, 1550mm
 Standard length: 2440mm.
 Maximum length: 6000mm, Nonstandard sizes on request.
 Package: wooden crates/ steel crates.

Application:

Curtain wall decoration, old exterior cladding renovation, Interior decoration,partition, ceiling , display boards, direction boards, billboards, shops decoration.

