

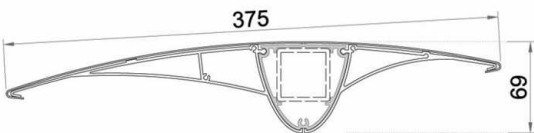
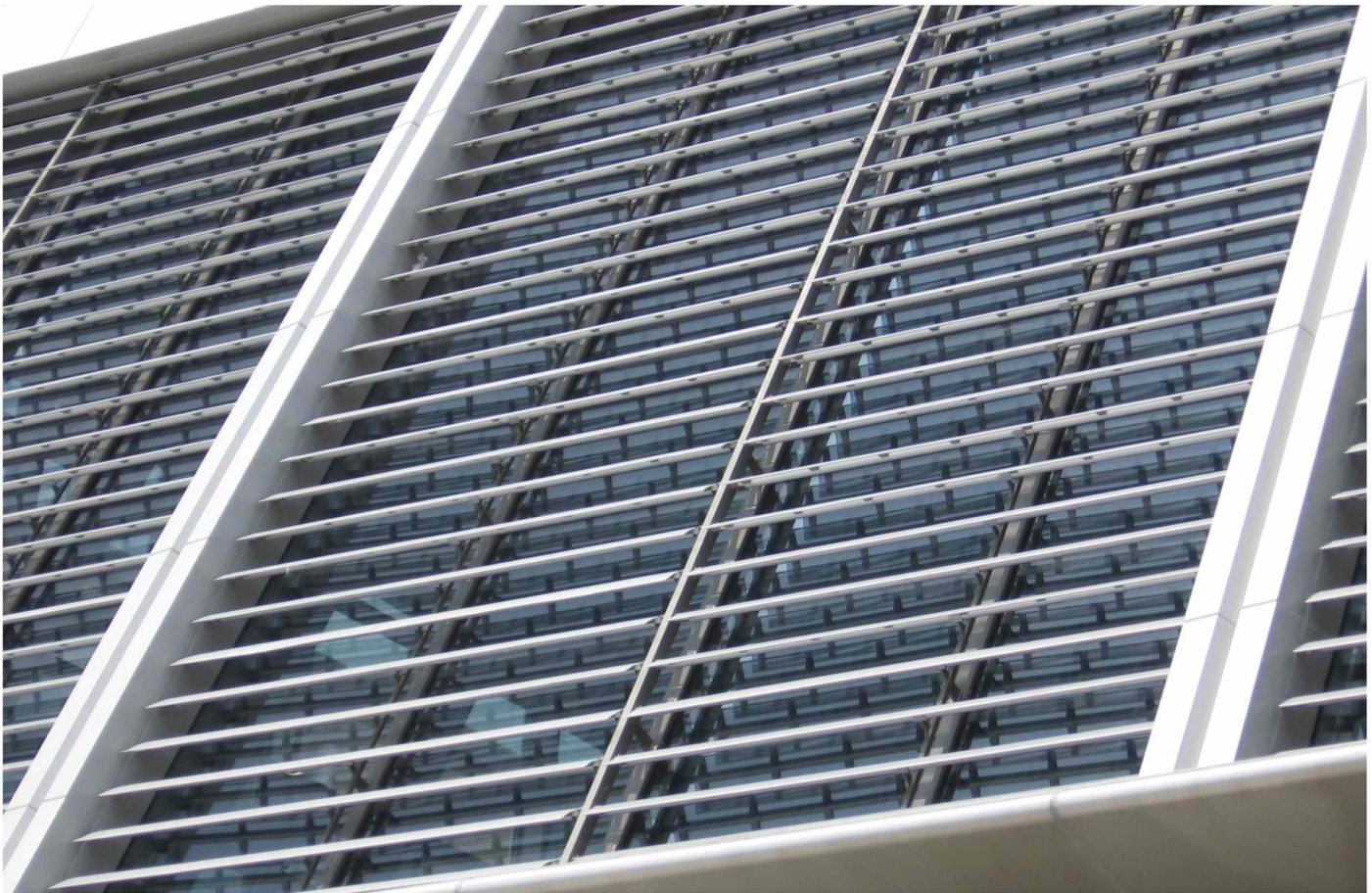
Description:

DEXONE AW series Aerowing Sun Louvers are combined type sun louvers,consisting of AW aluminum sun louvers panel,supporting axle and supporting frame.Maximum length 4000mm,maximum width 800mm,it can be made to be different shape and length according to design.

AW series Aerowing Sun Louvers features:

1. It can be perforated, increasing light transmittance,perforation open area can be 10~50%,different perforation pattern and open area is available for choice,please refer to P37.
2. Sun louvers panel is made up of aluminum panel,cold rolled forming, width and radian can be adjusted as request.
3. Light weight, strong wind resistance.The weight is only 1/2 as same area of AF series Aerofoil Sun Louvers. The panel is perforated,it can strengthen the wind resistance.
4. Simple structure, easy to install, AW series Aerowing Sun Louvers are combined structure: fix the supporting axle and frame first, then install the panel. It has no limited by installation space and direction, It can be installed by screw, very easy.

Colors and Surface: The surface of the panel can be anodized,PVDF spraying or powder coating. Various RAL colors and wood grain colors are available.



COMBINATING DETAILS



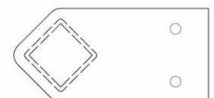
1mm THK. ALUMINUM PANEL
PERFORATION OR NON-PERFORATION



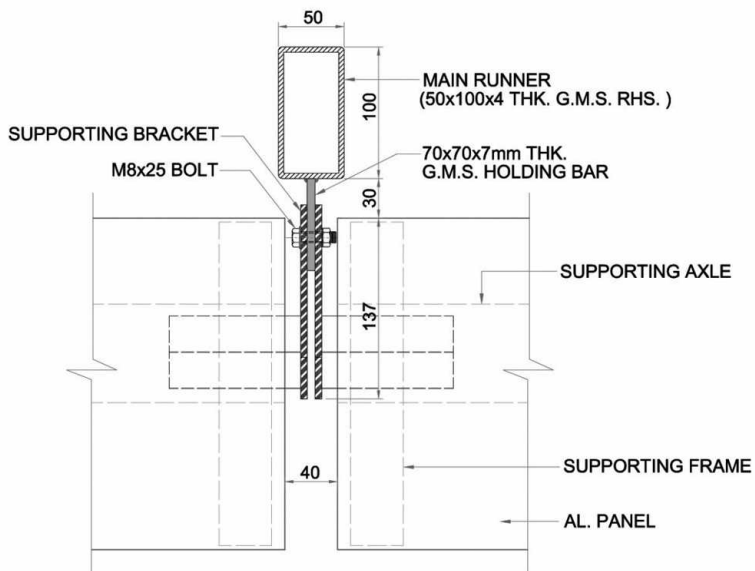
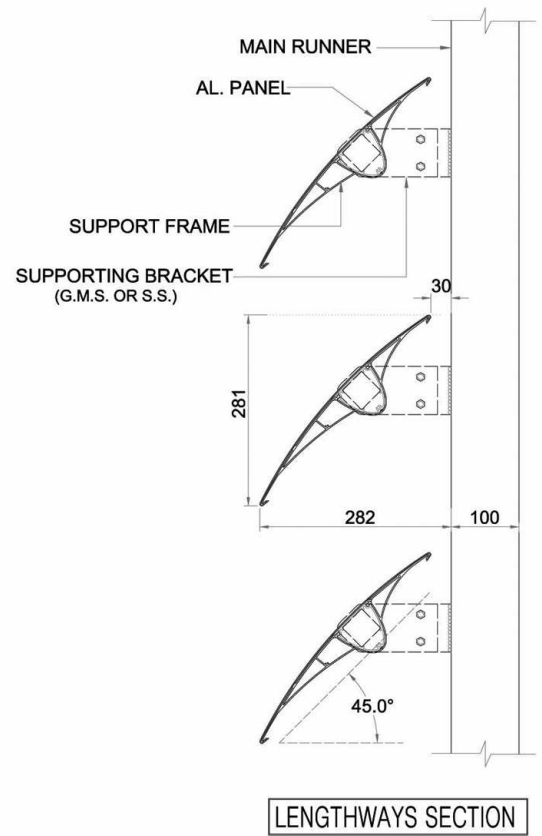
SUPPORTING AXLE
(AL. EXTRUDED)



SUPPORTING FRAME
(AL. EXTRUDED)



SUPPORTING BRACKET
(G.M.S. OR S.S.)



TRANSVERSAL SECTION

